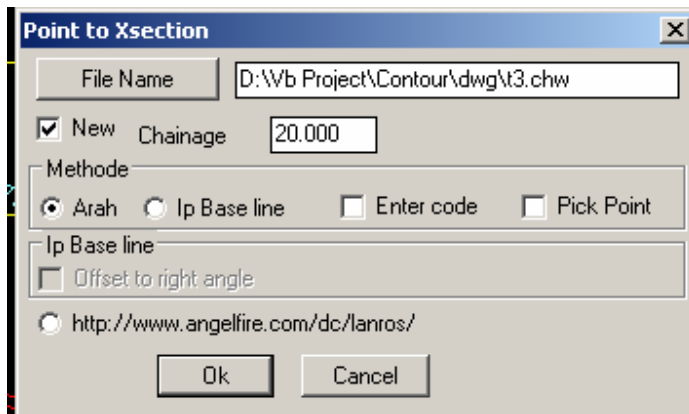
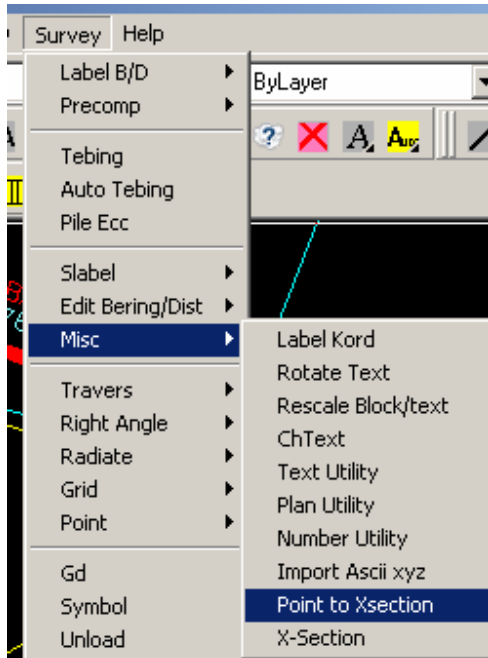
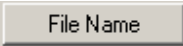
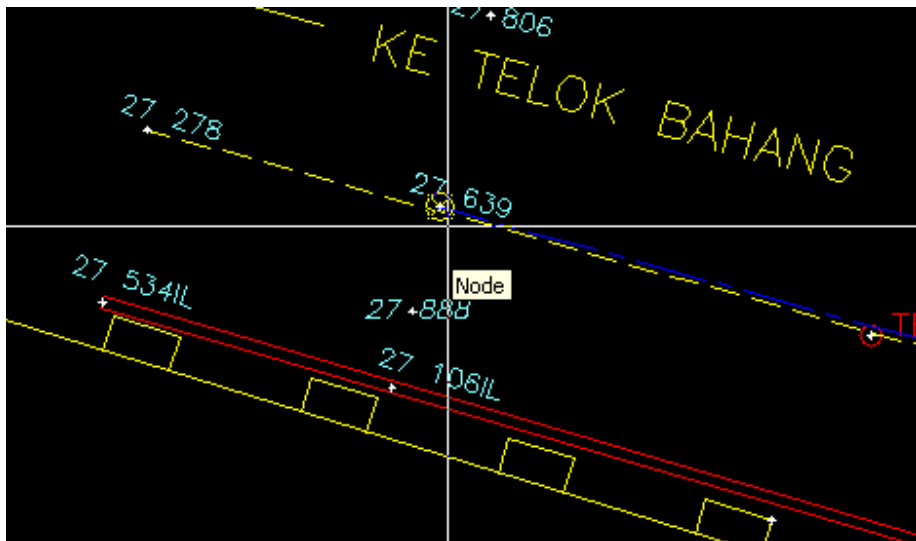


MANUAL POINT TO XSECTION

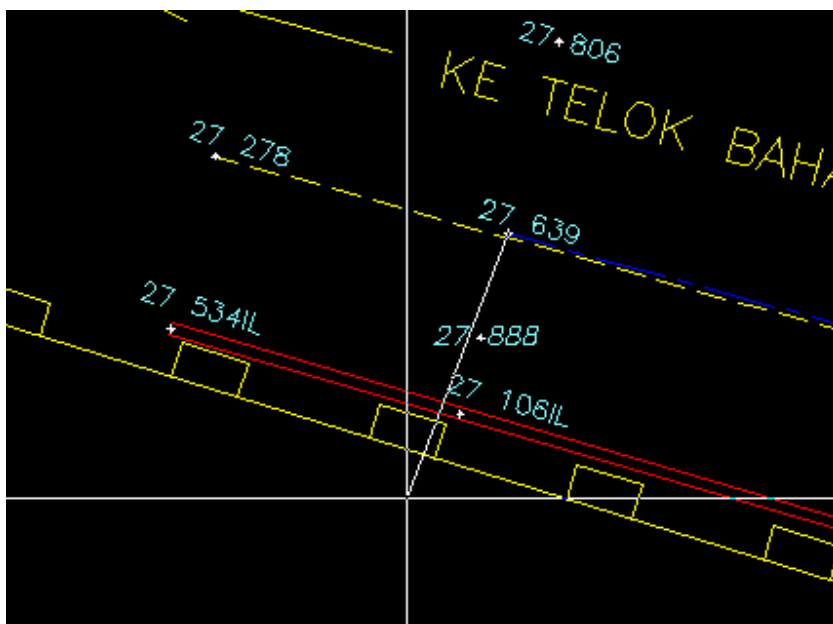
Basis – point mestilah 3D.



Jangan taip file name di box gunakan  button.



```
Hardware Licence Passed..  
CH: 10.000  
<S>etting <C>hainage <Pick Centerline><X>:node of  
Pick Centerline untuk offset 0.000
```

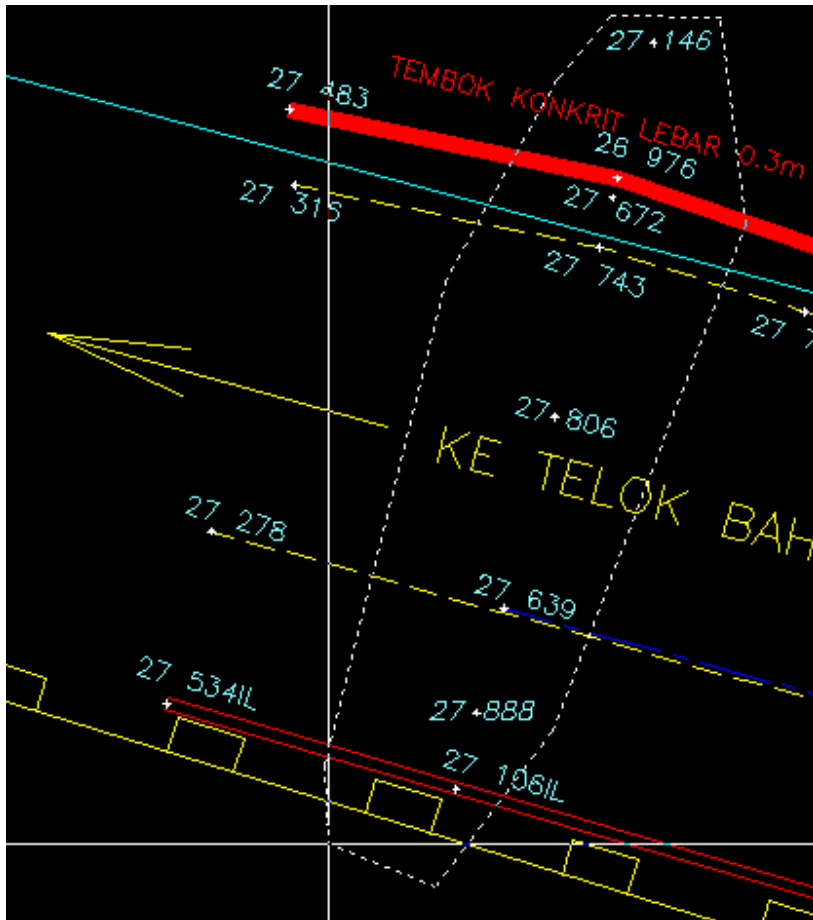


```
<S>etting <C>hainage <Pick Centerline><X>:node of  
sret :X  
Pick where is left offset<X>:
```

Pick dimana KIRI.

```
sret :X  
Pick where is left offset<X>:  
Select objects: cp
```

untuk memudahkan gunakan cp / wp ka apapa ka...



Selected Crosssection Points.

Selepas siap select press enter(mouse btn kanan) untuk ulang program semula

```
BASIC_ICAD_PTP_XSECTION
Hardware Licence Passed..
CH: 10.000
<S>etting <C>hainage <Pick Centerline><X>:c
sret :cChainage<10.000>:20
CH: 20.000
<S>etting <C>hainage <Pick Centerline><X>:*Cancel*
<S>etting <C>hainage <Pick Centerline><X>:
```

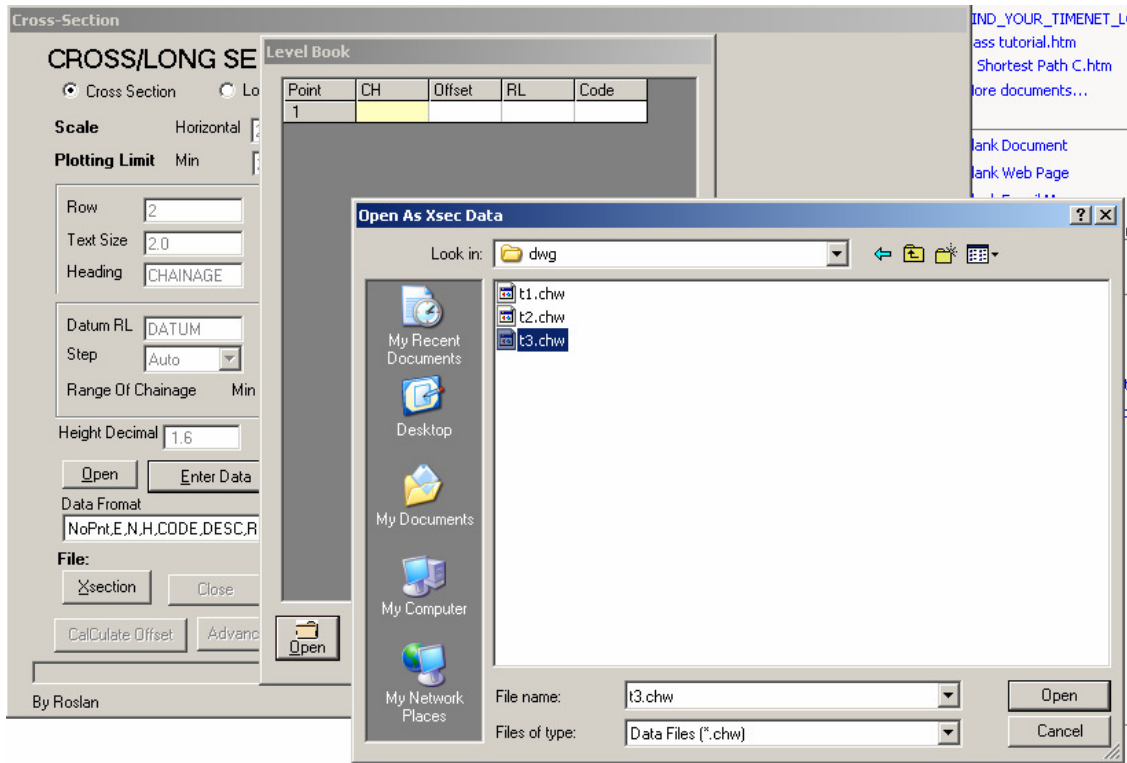
Type

C -untuk ubah chainage

S -ke setting dialog

Untuk Buat XSEC guna program Cross Section seperti biasa dan open file yang dibuat tadi.

Point to Xsection page 4 of 5



Level Book (D:\...\t3.chw)

Point	CH	Offset	RL	Code
1	10.000	0.000	27.639	P
2	10.000	7.060	27.806	P
3	10.000	13.301	27.743	P
4	10.000	15.120	27.672	P
5	10.000	15.840	26.976	P
6	10.000	20.840	27.146	P
7	10.000	-3.842	27.888	P
8	10.000	-6.650	27.106	P

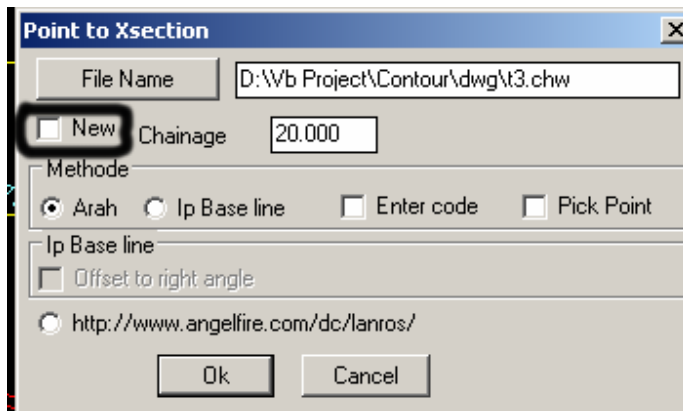
Buttons: Open, Save, Close, Save As, Help

Anda bole edit atau apa- apa sajalah.

Anda Mesti Save sebab di Autocad no point tidak betul.

Point to Xsection page 5 of 5

Untuk sambung kerja **untick new** gunakan file yang sama utk kerja yg sama.
Jangan taip file name di box gunakan button



Software ini boleh pilih samada select point atau pick point.